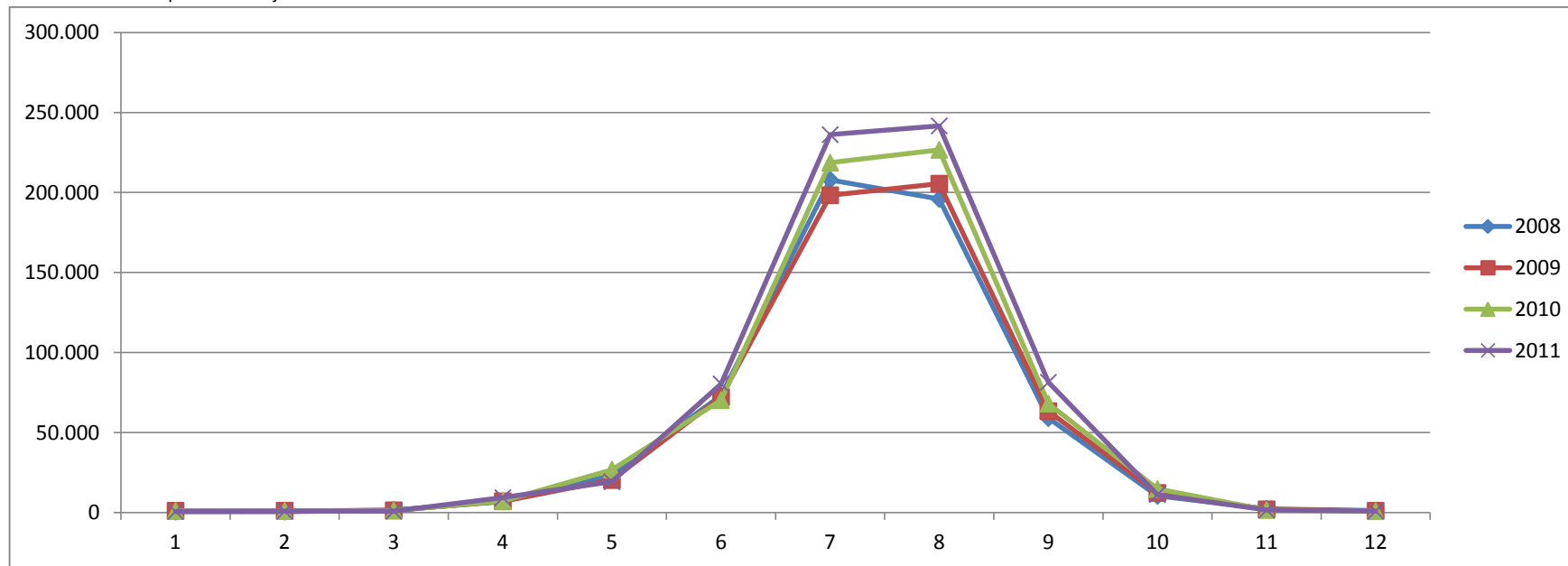


Turistička zajednica općine Orebić
Analiza turističkog prometa 2008. - 2011.

Tablica 1. Broj noćenja po mjesecima

	2008.		2009.		2010.		2011.		index 09/08		index 10/09		index 11/10		razlika u br. noć. (11-10)
	dolasci	noćenja	dolasci	noćenja	dolasci	noćenja	dolasci	noćenja	dolasci	noćenja	dolasci	noćenja	dolasci	noćenja	
Siječanj	43	555	56	1.096	37	1.034	47	614	30,23%	97,48%	-33,93%	-5,66%	27,03%	-40,62%	-420
Veljača	45	587	40	1.122	44	930	49	786	-11,11%	91,14%	10,00%	-17,11%	11,36%	-15,48%	-144
Ožujak	237	1.542	95	1.365	105	1.160	72	802	-59,92%	-11,48%	10,53%	-15,02%	-31,43%	-30,86%	-358
Travanj	1.727	6.875	1.171	7.010	1.152	7.178	1.877	9.262	-32,19%	1,96%	-1,62%	2,40%	62,93%	29,03%	2.084
Svibanj	5.447	23.333	3.557	20.289	3.868	26.766	3.193	19.201	-34,70%	-13,05%	8,74%	31,92%	-17,45%	-28,26%	-7.565
Lipanj	11.904	73.193	10.810	72.158	10.534	70.230	12.029	80.402	-9,19%	-1,41%	-2,55%	-2,67%	14,19%	14,48%	10.172
Srpanj	25.293	207.903	23.430	198.249	27.187	218.637	30.299	236.157	-7,37%	-4,64%	16,03%	10,28%	11,45%	8,01%	17.520
Kolovoz	23.007	195.904	24.813	205.499	26.315	226.649	27.341	241.601	7,85%	4,90%	6,05%	10,29%	3,90%	6,60%	14.952
Rujan	6.828	59.010	7.134	63.348	8.057	68.014	9.867	81.413	4,48%	7,35%	12,94%	7,37%	22,46%	19,70%	13.399
Listopad	1.214	10.450	1.345	12.214	1.751	14.739	1.347	11.201	10,79%	16,88%	30,19%	20,67%	-23,07%	-24,00%	-3.538
Studeni	70	2.311	63	1.987	101	1.607	156	1.492	-10,00%	-14,02%	60,32%	-19,12%	54,46%	-7,16%	-115
Prosinac	44	1.140	34	1.082	20	823	63	873	-22,73%	-5,09%	-41,18%	-23,94%	215,00%	6,08%	50
UKUPNO	75.859	582.803	72.548	585.419	79.171	637.767	86.340	683.804	-4,36%	0,45%	9,13%	8,94%	9,06%	7,22%	46.037

Grafikon 1. Grafički prikaz noćenja 2008. - 2011.

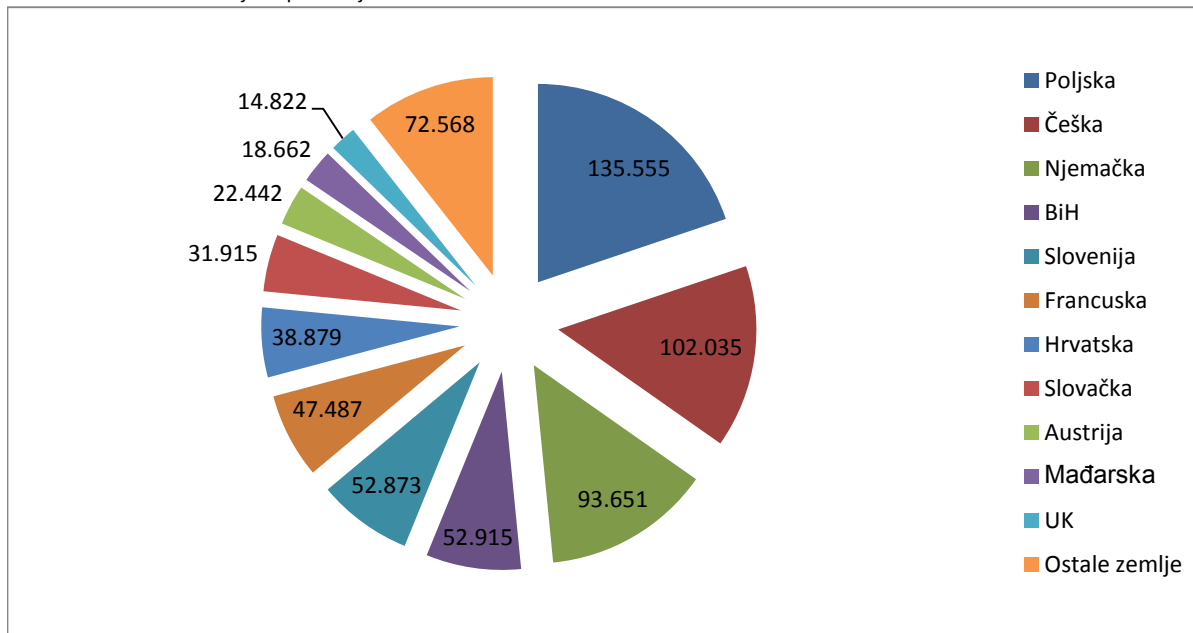


Turistička zajednica općine Orebić
 Analiza turističkog prometa 2008. - 2011.

Tablica 2. Turistički promet po emitivnim zemljama

	2008.		udio 2008. noćenja	2009.		udio 2009. noćenja	2010.		udio 2010. noćenja	2011.		udio 2011. noćenja	index 11/10 noćenja	2011-2010
	dolasci	noćenja		dolasci	noćenja		dolasci	noćenja		dolasci	noćenja			
Poljska	10.220	85.614	14,69%	14.284	119.115	20,35%	16.176	134.814	21,14%	17.158	135.555	19,82%	0,55%	741
Češka	10.707	93.596	16,06%	9.154	78.725	13,45%	10.252	86.799	13,61%	12.481	102.035	14,92%	17,55%	15.236
Njemačka	7.935	64.163	11,01%	8.599	68.560	11,71%	10.860	85.857	13,46%	11.296	93.651	13,70%	9,08%	7.794
BiH	6.799	55.585	9,54%	6.011	49.541	8,46%	6.665	53.968	8,46%	6.678	52.915	7,74%	-1,95%	-1.053
Slovenija	5.257	47.901	8,22%	4.547	40.920	6,99%	4.977	45.981	7,21%	5.865	52.873	7,73%	14,99%	6.892
Francuska	4.341	32.574	5,59%	4.366	36.010	6,15%	5.481	46.883	7,35%	5.712	47.487	6,94%	1,29%	604
Hrvatska	5.084	34.078	5,85%	4.085	34.633	5,92%	4.455	36.318	5,69%	4.765	38.879	5,69%	7,05%	2.561
Slovačka	6.716	53.913	9,25%	4.888	37.984	6,49%	2.587	21.475	3,37%	4.024	31.915	4,67%	48,61%	10.440
Austrija	1.845	13.878	2,38%	2.023	15.128	2,58%	2.706	20.319	3,19%	2.731	22.442	3,28%	10,45%	2.123
Mađarska	3.316	23.157	3,97%	2.778	19.584	3,35%	2.548	18.174	2,85%	2.762	18.662	2,73%	2,69%	488
UK	1.563	12.902	2,21%	2.547	22.606	3,86%	1.838	14.911	2,34%	1.806	14.822	2,17%	-0,60%	-89
Ostale zem	13.639	65.442	11,23%	9.232	62.613	10,70%	10.626	72.268	11,33%	11.062	72.568	10,61%	0,42%	300
UKUPNO	77.422	582.803	100,00%	72.514	585.419	100,00%	79.171	637.767	100,00%	86.340	683.804	100,00%	7,22%	46.037

Grafikon 2. Udio u noćenjima po zemljama 2011.

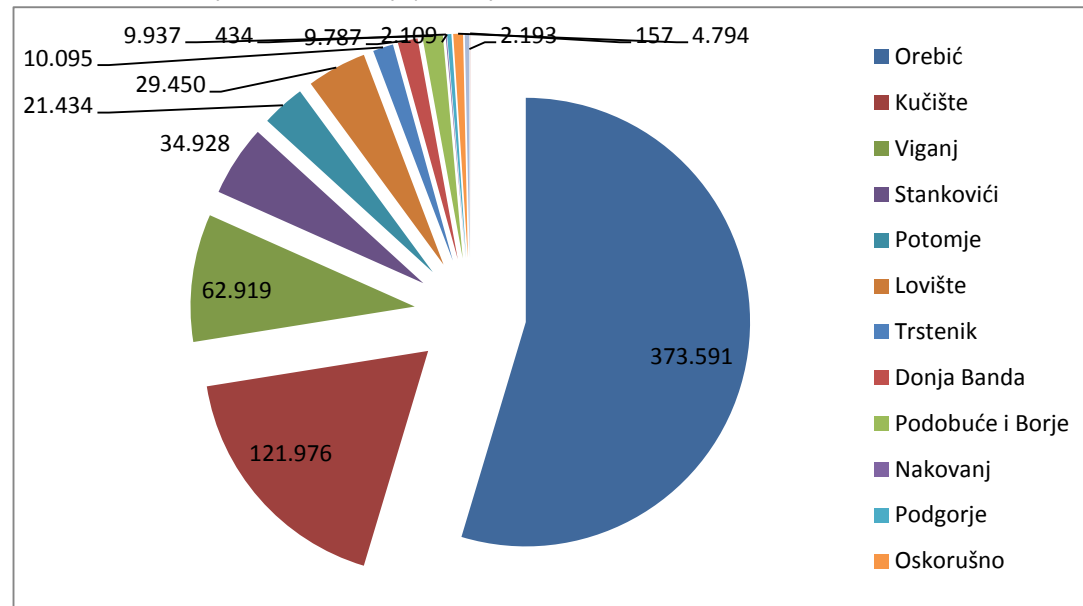


Turistička zajednica općine Orebić
Analiza turističkog prometa 2008. - 2011.

Tablica 3. Turistički promet po naseljima u općini Orebić

	2008.		2009.		2010.		2011.		index 11/10		2011-2010
	dolasci	noćenja	dolasci	noćenja	dolasci	noćenja	dolasci	noćenja	dolasci	noćenja	
Orebić	44.347	321.163	43.428	340.833	46.833	362.900	47.796	373.591	2,06%	2,95%	10.691
Kučište	16.246	125.043	13.507	109.851	11.819	102.356	16.020	121.976	35,54%	19,17%	19.620
Viganj	5.186	51.026	4.972	47.681	6.020	57.577	6.787	62.919	12,74%	9,28%	5.342
Stankovići	2.860	17.653	2.895	19.887	5.442	37.923	5.053	34.928	-7,15%	-7,90%	-2.995
Potomje	1.926	21.472	2.041	19.650	1.935	18.226	2.282	21.434	17,93%	17,60%	3.208
Lovište	2.180	19.506	2.463	19.009	3.040	23.620	3.646	29.450	19,93%	24,68%	5.830
Trstenik	989	7.615	1.092	8.653	1.185	9.712	1.240	10.095	4,64%	3,94%	383
Donja Banda	980	7.069	822	6.236	1.118	7.508	1.463	9.787	30,86%	30,35%	2.279
Podbuće i Borje	650	6.784	732	7.567	856	8.725	1.028	9.937	20,09%	13,89%	1.212
Nakovanj	0	0	0	0	61	665	41	434	-32,79%	-34,74%	-231
Podgorje	0	0	0	0	222	1.660	273	2.109	22,97%	27,05%	449
Oskorušno	314	3.577	401	4.369	415	4.646	465	4.794	12,05%	3,19%	148
Kuna	181	1.895	195	1.683	212	2.067	239	2.193	12,74%	6,10%	126
Pijavčino	0	0	0	0	13	182	7	157	-46,15%	-13,74%	-25
UKUPNO	75.859	582.803	72.548	585.419	79.171	637.767	86.340	683.804	9,06%	7,22%	46.037

Grafikon 3. Udio u broju turističkih noćenja po naseljima 2011.



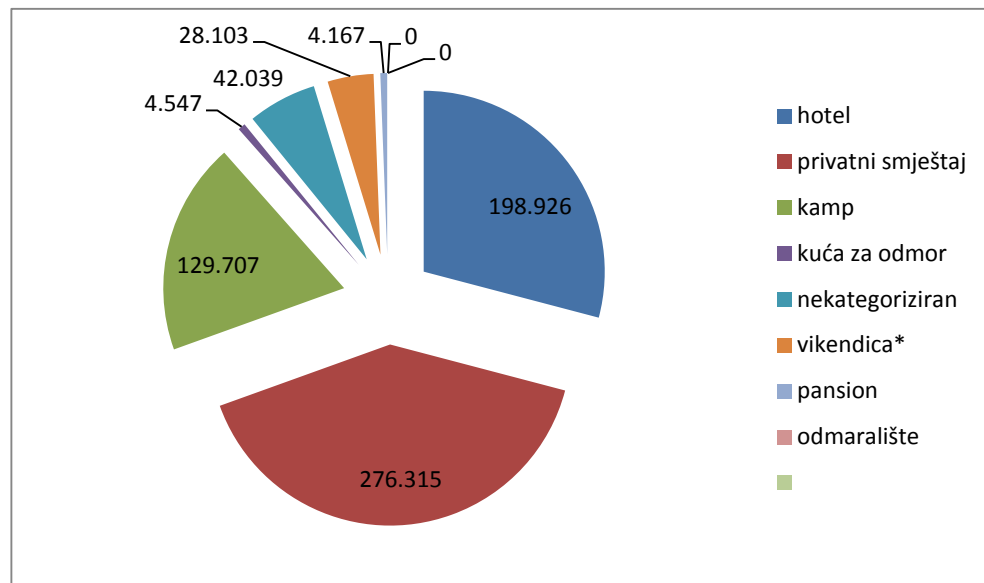
Turistička zajednica općine Orebić
 Analiza turističkog prometa 2008. - 2011.

Tablica 4. Turistički promet po smještajnim objektima

	2008.		udio u uk.br.noć.	2009.		udio u uk.br.noć.	2010.		udio u uk.br.noć.	2011.		udio u uk.br.noć.	index 11/10	
	dolasci	noćenja		dolasci	noćenja		dolasci	noćenja		dolasci	noćenja		dolasci	noćenja
hotel	30.409	205.441	35,25%	23.639	179.003	30,58%	23.428	174.284	27,33%	27.299	198.926	29,09%	16,52%	14,14%
privatni sm	21.884	190.233	32,64%	25.224	224.421	38,34%	30.858	268.003	42,02%	33.052	276.315	40,41%	7,11%	3,10%
kamp	16.689	115.720	19,86%	17.044	116.270	19,86%	17.058	115.144	18,05%	18.646	129.707	18,97%	9,31%	12,65%
kuća za odr	6.656	69.901	11,99%	5.904	60.792	10,38%	2.538	33.825	5,30%	411	4.547	0,66%	-83,81%	-86,56%
nekategoriz	0	0	0,00%	0	0	0,00%	4.440	41.083	6,44%	3.942	42.039	6,15%	-11,22%	2,33%
vikendica*	-	-	#VALUE!	-	-	#VALUE!	-	-	#VALUE!	2.351	28.103	4,11%	#VALUE!	#VALUE!
pansion	188	1.182	0,20%	728	4.817	0,82%	849	5.428	0,85%	639	4.167	0,61%	-24,73%	-23,23%
odmaralište	31	312	0,05%	0	0	0,00%	0	0	0,00%	0	0	0,00%	#DIV/0!	#DIV/0!
vez	2	14	0,00%	9	116	0,02%	0	0	0,00%	0	0	0,00%	#DIV/0!	#DIV/0!
UKUPNO	75.859	582.803	100,00%	72.548	585.419	100,00%	79.171	637.767	100,00%	86.340	683.804	100,00%	9,06%	7,22%

* vikendaši se izdvojeno od nekategoriziranog smještaja i kuća z aodmor tablično prikazuju od 2011.

Grafikon 4. Udio u ukupnom broju noćenja po smještajnim objektima u 2011.



Turistička zajednica općine Orebić
Analiza turističkog prometa 2008. - 2011.

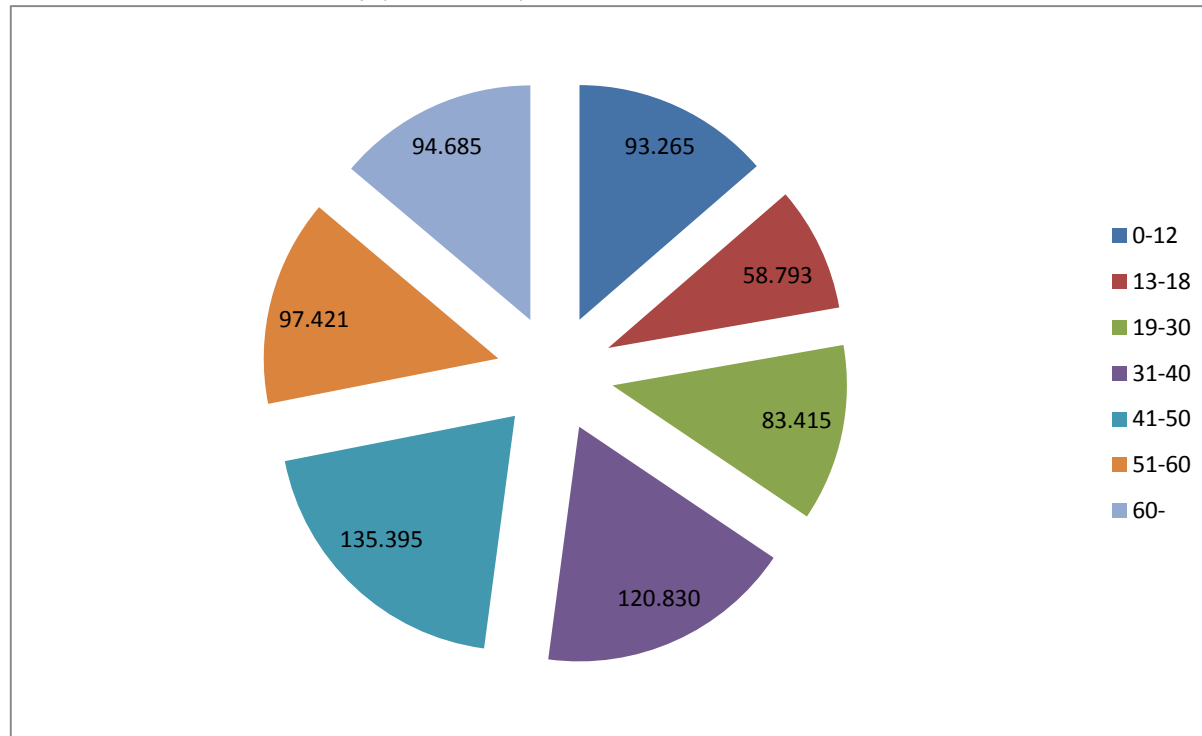
Tablica 5. Turistički promet po dobnim skupinama

	2008.		udio u uk.br.noć.	2009.		udio u uk.br.noć.	2010.		udio u uk.br.noć.	2011.		udio u uk.br.noć.	index 11/10	
	dolasci	noćenja		dolasci	noćenja		dolasci	noćenja		dolasci	noćenja		dolasci	noćenja
0-12	7.963	66.293	11,32%	8.288	72.122	11,31%	9.473	80.355	12,60%	10.918	93.265	13,64%	15,25%	16,07%
13-18	6.876	53.554	9,15%	6.260	52.854	8,29%	6.694	56.072	8,79%	7.111	58.793	8,60%	6,23%	4,85%
19-30	11.500	87.864	15,01%	10.536	80.480	12,62%	10.782	81.289	12,75%	11.526	83.415	12,20%	6,90%	2,62%
31-40	15.140	118.103	20,17%	14.138	108.981	17,09%	15.419	117.408	18,41%	16.074	120.830	17,67%	4,25%	2,91%
41-50	14.767	116.038	19,82%	14.384	115.353	18,09%	15.590	123.399	19,35%	17.480	135.395	19,80%	12,12%	9,72%
51-60	10.331	77.682	13,27%	10.417	81.226	12,74%	11.448	90.103	14,13%	12.730	97.421	14,25%	11,20%	8,12%
60-	9.365	66.622	11,38%	8.525	74.403	11,67%	9.765	89.141	13,98%	10.501	94.685	13,85%	7,54%	6,22%
UKUPNO	75.942	586.156	100,00%	72.548	585.419	100,00%	79.171	637.767	100,00%	86.340	683.804	100,00%	9,06%	7,22%

Tablica 6. Dani popunjenosti po naseljima

Naselje	dani popunjenosti
Orebić	55,21
Lovište	59,36
Viganj	78,69
Kučište	57,23
Stankovići	97,8
Donja Banda	46,85
Trstenik	48,42
Podobuće i B	55,05
Nakovanj	58,83
Podgorje	31,35
Kuna	71,74
Potomje	77,94
Oskorušno	73,66

Grafikon 5. Ostvarena turistička noćenja po dobnim skupinama u 2011.



Turistička zajednica općine Orebić
Analiza turističkog prometa 2008. - 2011.

Tablica 7. Turistički promet na području DNŽ 2008 -2011

TZ	2008.	Udio u uk. prometu	2009.	Udio u uk. prometu	2010.	Udio u uk. prometu	2011.	Udio u uk. prometu	index 09/08	index 10/09	index 11/10
TZO Dubrovnik	1.796.068	39,20%	1.932.330	39,58%	2.068.676	42,38%	2.218.579	43,14%	7,59%	7,06%	7,25%
TZO Orebić	582.803	12,72%	585.419	11,99%	637.767	13,06%	683.804	13,30%	0,45%	8,94%	7,22%
TZO Konavle	486.778	10,62%	456.607	9,35%	479.875	9,83%	486.970	9,47%	-6,20%	5,10%	1,48%
Župa Dbk	333.432	7,28%	290.339	5,95%	315.251	6,46%	323.311	6,29%	-12,92%	8,58%	2,56%
Korčula	363.625	7,94%	337.445	6,91%	297.099	6,09%	299.216	5,82%	-7,20%	-11,96%	0,71%
Slivno	61.266	1,34%	57.188	1,17%	67.012	1,37%	146.532	2,85%	-6,66%	17,18%	118,67%
Vela Luka	132.147	2,88%	117.121	2,40%	128.889	2,64%	133.156	2,59%	-11,37%	10,05%	3,31%
Dbk primorje	95.328	2,08%	104.631	2,14%	128.632	2,64%	132.913	2,58%	9,76%	22,94%	3,33%
TZO Lumbarda	130.101	2,84%	120.541	2,47%	123.443	2,53%	124.985	2,43%	-7,35%	2,41%	1,25%
TZO Trpanj	97.795	2,13%	90.401	1,85%	115.564	2,37%	120.513	2,34%	-7,56%	27,83%	4,28%
TZO Blato	88.172	1,92%	104.463	2,14%	112.576	2,31%	118.332	2,30%	18,48%	7,77%	5,11%
TZO Ston	77.757	1,70%	75.668	1,55%	120.192	2,46%	117.058	2,28%	-2,69%	58,84%	-2,61%
TZO Mljet	23.930	0,52%	25.145	0,52%	79.098	1,62%	78.854	1,53%	5,08%	214,57%	-0,31%
TZO Janjina	54.616	1,19%	55.665	1,14%	56.416	1,16%	60.367	1,17%	1,92%	1,35%	7,00%
TZO Lastovo	50.712	1,11%	41.988	0,86%	43.867	0,90%	44.665	0,87%	-17,20%	4,48%	1,82%
TZO Smokvica	34.574	0,75%	31.943	0,65%	35.605	0,73%	35.933	0,70%	-7,61%	11,46%	0,92%
TZG Ploče	6190	0,14%	4494	0,09%	6136	0,13%	12248	0,24%	-27,40%	36,54%	99,61%
TZG Metković	13.294	0,29%	12.844	0,26%	8.665	0,18%	5.373	0,10%	-3,38%	-32,54%	-37,99%
TZG Opuzen	1842	0,04%	631	0,01%	0	0,00%	147	0,00%	-65,74%	-100,00%	#DIV/0!
TZM Žuljana	31.622	0,69%	30.196	0,62%	0	0,00%	0	0,00%	-4,51%	-100,00%	#DIV/0!
TZM Klek	64.033	1,40%	50.009	1,02%	56.810	1,16%	0	0,00%	-21,90%	13,60%	-100,00%
TZM Goveđari	55.649	1,21%	49.877	1,02%	0	0,00%	0	0,00%	-10,37%	-100,00%	#DIV/0!
Ukupno	4.581.734	100,00%	4.574.945	100,00%	4.881.573	100,00%	5.142.956	100,00%	-0,15%	6,70%	5,35%

Podaci TZ DNŽ